

COMPANY PROFILE

KUM HO

INDUSTRIAL CO., LTD

금호공업(주) / 錦浩工業(株)

Contents

CONTENTS

KH

1. Business overview

01. Company status	04P
02. Management policy	05P
03. Certificate	05P

2. Company history

01. Company history	07P
02. Organization	08P
03. Major customers	08P

3. Equipment

01. Sales turnover	10P
02. Equipment	11P
03. Business registration	13P

4. Information

01. Contact us	14P
----------------	-----





01 Business Overview

01. Company status 04P

02. Management Policy 05P

03. Certificate 05P

ABOUTS **OUR** COMPANY

Founded in 2001, Kum-ho Industrial Co., Ltd has produced **gears, shafts, axles and transmission assembly**, based on the high quality and productivity. With the accumulated technology from 40 year-experience of the president, the company has enforced its competitive power in quality by acquiring ISO9000 in 2005, TS16949 in 2013 and IATF16949 in 2018.

Appointed as Technology Innovation Business in 2012 and approved as R&D Specific Business in 2018, Kum-ho Industrial Co., Ltd is trying to meet the needs of customers with high qualified products and to develop production and services.

"To the world with high technology!"



📍 104 Saneup-ro, Jeongchon-myeon, Jinju City, Gyeongnam Province, Republic of Korea
The factory completed on June30, 2014

Company Status President 김용한(KIM YONG HAN)



(TEL) 055-761-8430 (FAX) 055-761-8403



kh8403@hanmail.net



Business Registration No. 613-81-25994



Main products| Gears & axles for autos,
heavy equipment and agri-machines

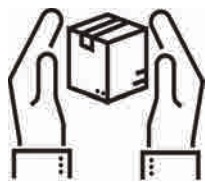


Turnover: 6.8 Billion KRW(as of 2020) Employees: 50 persons
Factory Area: Site : 7,810m²

01 - 02

MANAGEMENT POLICY

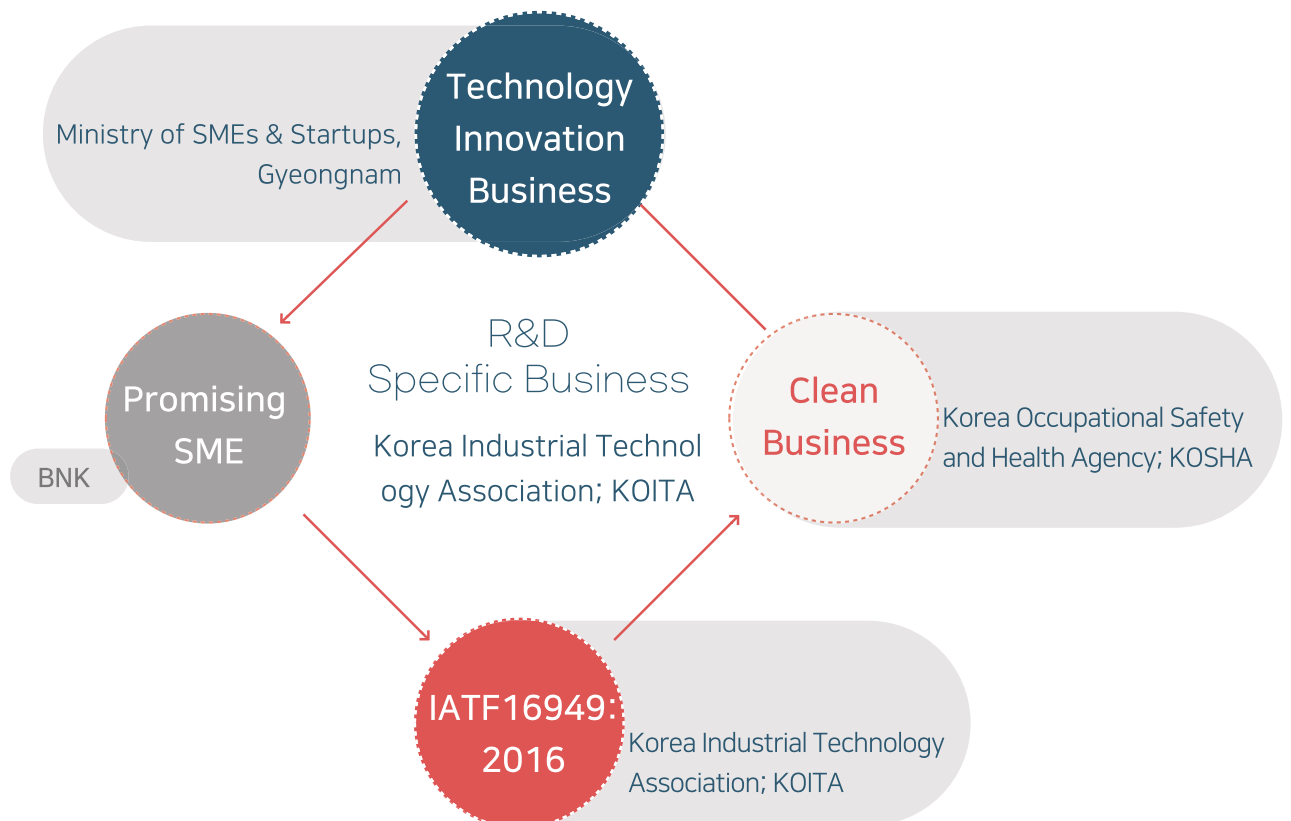
Kum-ho Industrial Co., Ltd has increased the operators' safety and productivity through strict quality control after figuring out the customers' needs.



01 - 03



CERTIFICATE





02 Kum-Ho History

01. Company History	07P
02. Table of organization	08P
03. Major customers	08P

02 - 01

Kum-Ho Industrial Co., LTD

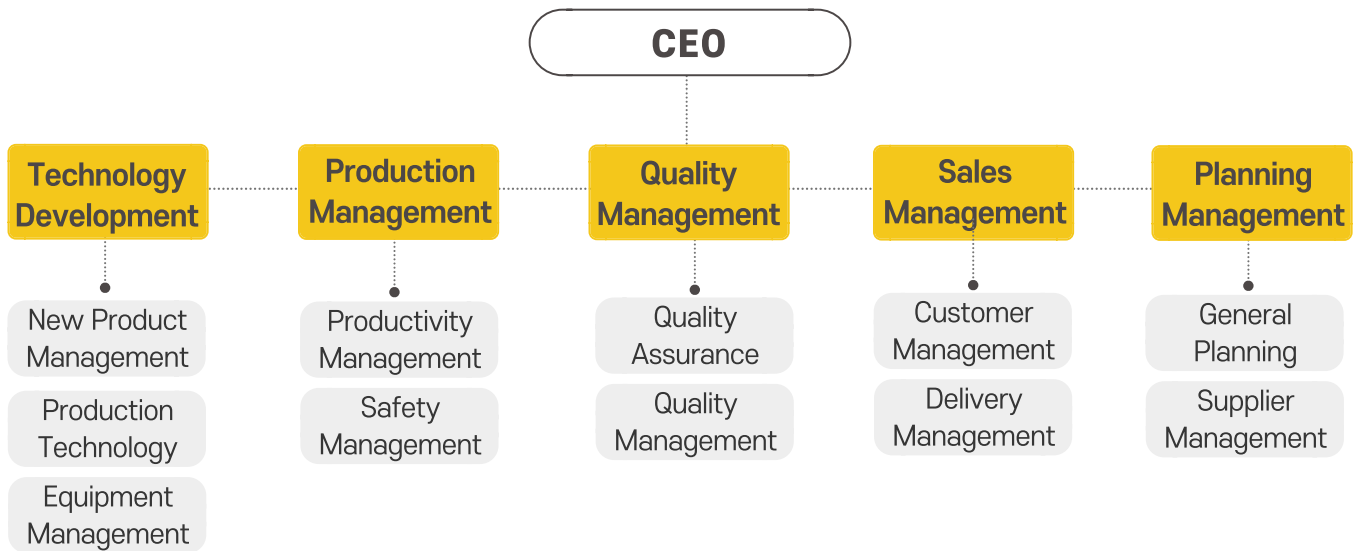


HISTORY

- 1996 KUM-HO Industry founded
- 2000 Registered as a Partner Business to Dae-dong Gear
- 2001 Converted to Kum-ho Industrial Co.,
- 2003 Registered as a Partner Business to DIC Korea Co.
- 2005 Acquired ISO9000
- 2012 Appointed as Technology Innovation Business
- 2013 Acquired TS16949(ISO9001)
- 2014 Moved to Jeongchon General Industrial Complex
- 2018 Acquired IATF16949:2016 R&D Specific Business

02 - 02

Table of Organization



02 - 03

Major Customers

● This is the customer list of Kum-ho Industrial Co., Ltd.





03 Equipment & Certificate

01. Sales turnover 10P

02. Equipment 11P

03. Business registration 13P

03 - 01

SALES TURNOVER

KUMHO INDUSTRIAL CO., LTD



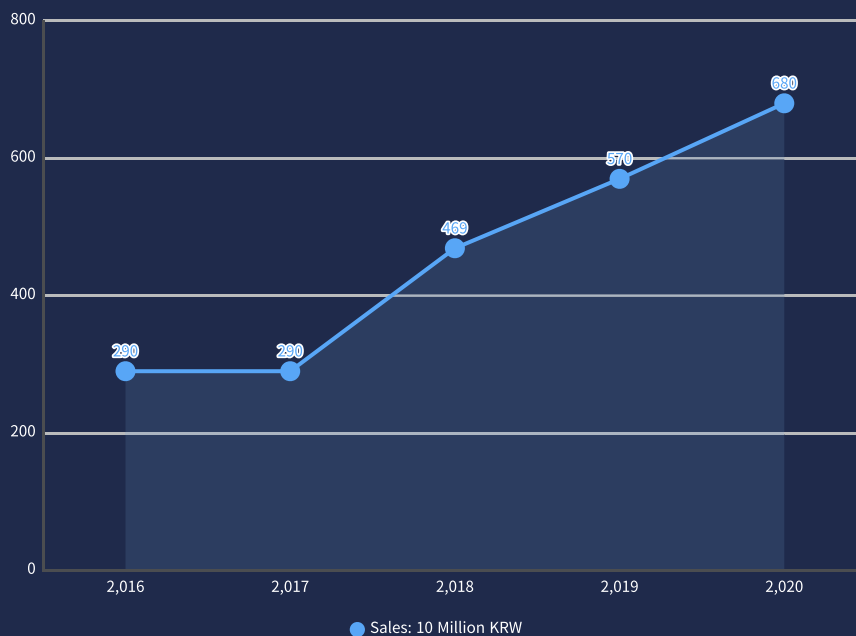
2020
6.8 BILLION KRW



2009
3 BILLION KRW



2004
2 BILLION KRW



03 - 02

Equipment

01



9 MCT : BT40 / BT30

1) CONNECTOR 2) DIFF GEAR

02



12 SHAVING COMPOUNDING MACHINE

03



16 CNC LATHES : 6 INCH / 8 INCH

1) AUTOMATED GAMMA INPUT SHAFT 2) AUTOMATED SLEEVE

40 CNC HOBBING

1) DIFF GEAR 2) Y7T SLEEVE 3) COMPOUNDED OPERATION

* Possible to be automated for Spur and Helical Gears/ Axle Gear(Spur, Helical)

04

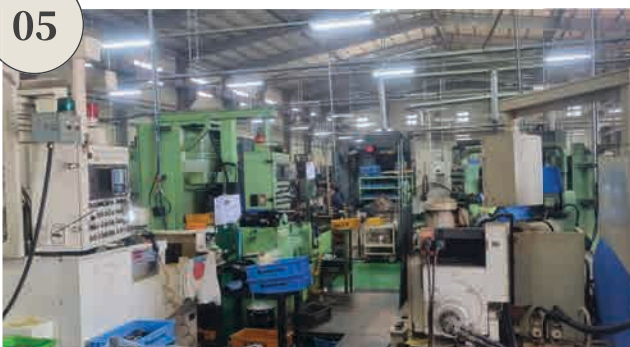


15 GEAR SHAPERS

1) CBC GEAR 2) AUTOMATED SLEEVE LINE

* Guide attached, possible to shape the different inner teeth
The head turns to 10 degree

05



7 CHAMFERING MACHINE

3 ROLLING MACHINE

3 BROACHING MACHINE

06



1 ANGULAR/ VERTICAL GRINDING MACHINE

1 EXTERNAL DIAMETER GRINDING MACHINE

1 INTERNAL DIAMETER GRINDING MACHINE

03 - 02

Equipment_TEST

01



GEAR TESTER

The whole length of 600
with diameter of 300
OSAKA-SEMITSU

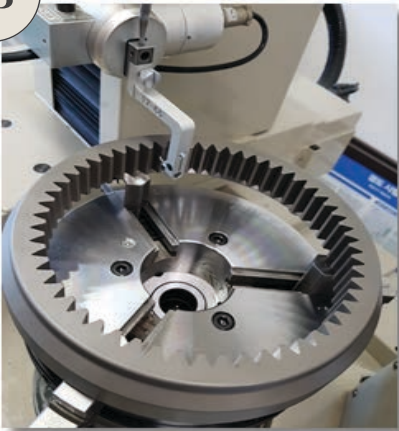
02



2D Measuring device

MITUTOYO LH600

03



Picture of gear test

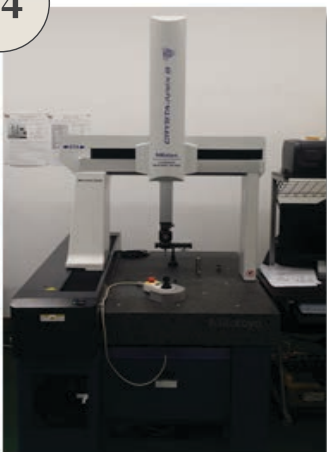
Picture of inner teeth test



Picture of gear test

Picture of outer teeth test

04



3D Measuring device

MITUTOYO CRYSTA-APEXS
(500*700*400)

05



Shape measuring instrument

03 - 02

Building

01

Factory #1



02



Factory #2

To improve quality and productivity, the Factory #2 was added with smart automated production line. Automated production equipment for Differential Gears (smart automation completed)

03



Warehouse

Warehouse for raw materials/We operate the warehouse specific for raw materials to store and release systematically.

04



Tractor Module Assembly Building

This is where tractor transmission is assembled.

03 - 03

CERTIFICATE OF BUSINESS REGISTRATION

KUMHO INDUSTRIAL CO., LTD

발급번호 ISSUANCE NUMBER 0027017KZ714		사업자등록증명 Certificate of Business Registration (법인사업자) (Corporate Taxpayer)	처리기간 Processing time 즉시 Immediately
상호 (법인명) 상호등록번호 (Business registration number)	KUMHO INDUSTRIAL CO. (K13-81-25004)		
사업자등록번호 Business registration number	K13-81-25004		
상호 (대표명) 상호등록번호 (Representative registration number)	김용환 KIM YONG HWAN (10111-0023403)		
주식(법인)등록번호 Registration number	10111-0023403		
사업장소재지 Business Address	경상남도 진주시 영남로 104 104, Jinju-ro, Jinju-si, Gyeongsang-do, Republic of Korea		
영업일 Date of business commencement	2001년 (Year) 09월 (Month) 01일 (Day)		
업종 Business type	제조/제조업 Manufacturing/Manufacturing		
주요제품 Main products	농기계류 Manufacture of agricultural and forestry machinery 자동차 부품 Manufacture of motor vehicle parts		
공동사업자 Joint business partner	없습니다 (No Data)		

I certify that above information is true and correct to the best of my knowledge and belief.
본 정보는 진실한 사실에 근거하여 작성되었으며, 오류 발생될 수 있습니다.
This information is true on the issuance date of this certification, but maybe subject to change in the future.
본 정보는 임의의 거짓(상호, 대표명(대표자), 영업, 연차, 상해주소)은 실제와 다를 수 있음을 증명하는 서류가 아닙니다.
Arbitrary data in establishment of company, name of representative, business type, business (etc. detail) addition, etc. may lead to error in prove the actual relationship of rights.

2022년 1월 24일
Year Month Day
진주세무서장 (인)
Head of Jinju District Tax Office

CERTIFICATE OF QUALIFICATION

1) IATF16949:2016



2) R&D Specific Business



3) Technology Innovation Business : Ministry of SMEs & Startups, Gyeongnam

4) Promising SME : BNK

5) Clean Business : Korea Occupational safety and Health Agency; KOSHA

(Korea Industrial Technology Association; KOITA)

CONTACT US

If you have any questions,
Please contact the below.

:: Contact Information ::



+82+55+761+8430



104, Saneop-ro, Jeongchon-myeon, Jinju-si,
Gyeongsangnam-do, Republic of Korea.



kh8403@hanmail.net



<https://kumhokorea.modoo.at>



Thank you.

KUMHO INDUSTRIAL CO., LTD